

MASTERBATCH & COMPOUND SYSTEMS



More efficient production with Xinda technology!



TABLE OF CONTENTS

PAGE NUMBER

01-01	TABLE OF CONTENTS
02-02	XINDA GROUP - Group Companies and Products
03-03	CO KNEADER - Introduction
04-04	CO KNEADER - SJW (Melt Pump)
05-05	CO KNEADER - SJW (Cascade)
06-06	CO KNEADER - SJW (Thermoset)
07-07	CO KNEADER - SKW (Cable Compound System)
08-08	CO KNEADER - WKS (PVC Compounding System)
09-09	CO KNEADER - Application & Capacity Table
10-10	CO ROTATE TWIN SCREW - SHJ Twin Screw Extruder
11-11	CO ROTATE TWIN SCREW - PSHJ Clamshell Barrel Twin Screw Extruder
12-12	CO ROTATE TWIN SCREW - SHJ (C) Two Stage Twin Screw Extruder
13-13	CO ROTATE TWIN SCREW - Application & Capacity Table
14-14	EXTRUDER SPARE PARTS
15-17	AUXILIARY EQUIPMENTS
18-18	LABORATORY EQUIPMENTS
19-19	REFERENCES



- **XINDA** has a deep experience for **35 years** on compounding industry. After Mr. Kong's foundation of color masterbatch company at **1988**, we started to produce compounding extruders at **1994**.
- Our factory is located on **40.000m2** area and we have the latest technology equipments in the plant. We also have another 1000m2 plant in Turkiye to produce compounding extruders.
- **XINDA** has more than **2700** running masterbatch & compounding lines in **65** countries over the world.

XINDA GRUP

XINDA , founded by Mr. Kong Xiangming in 1988, is a prominent enterprise known for its outstanding products in areas both domestic and abroad. Since then, Xinda has been focusing on producing the equipment and supply the turn-key solution for compounding and extruding industries.

Group Companies and Products ;

JIANGSU XINDA TECH LTD

- Co-Kneader (Masterbatch and compound line)
- Twin Screw Extruder (Clamshell barrel design)
- Auxiliary Equipments (turbo mixer, packing machine, dosing systems, pelletizer, vibration sieve, etc.)
- Plastic Recycling Extrusion Lines

JIANGYIN ZHONGYA POLYMER MATERIALS CO., LTD

- Color Masterbatch Production

XINDA EUROPE DIS TIC LTD STI

- Co-Kneader (Masterbatch and compound line)
- Twin Screw Extruder (Clamshell barrel design)
- Auxiliary Equipments (turbo mixer, packing machine, dosing systems, pelletizer, vibration sieve, etc.)

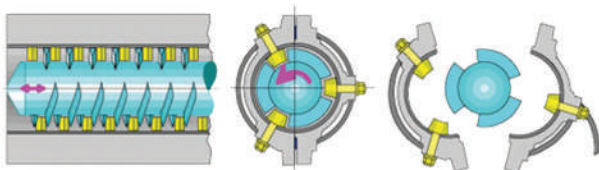
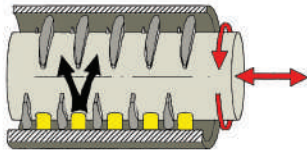
JIANGYIN TERYLON CHEMICAL FIBER CO., LTD

- Polyester Staple Fiber Production
- Aluminum Hydroxide (ATH)



XINDA CO-KNEADER

XINDA is one of the few producers in the world for Co-Kneader "Reciprocating Kneader Technology". This technology is completely different than other conventional single or twin screw extruder technologies. It is designed especially for shear and heat sensitive compounds. XINDA has installed hundreds of Co-Kneader lines over the world until today.



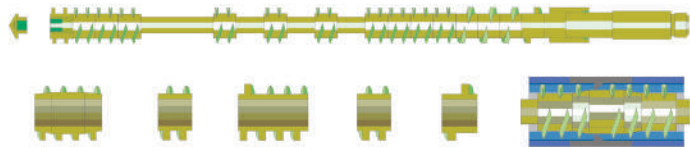
(Co-Kneader Screw / Pin / Barrel System)

Co-Kneader, has a unique mechanism. While the shaft rotates axially, also moves back and forth continuously. The screw elements have flights. Also, there are fixed pins on the liner walls. These fixed pins will be stay in the gaps of the screw flights while rotating the shaft. During this process, the material is not only sheared between the pins and kneading flights, but also inverted.

Shorter screw, higher dispersion, higher quality products,

Lower pressure, lower melt temperatures, lower energy consumption,

Extremely homogenous mixing, full surface sweep, no dead spot due to interaction of screws and pins.



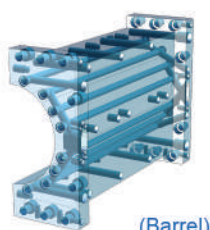
(Modular Screw)

Dispersive mixing without destroying sensitive fillers,

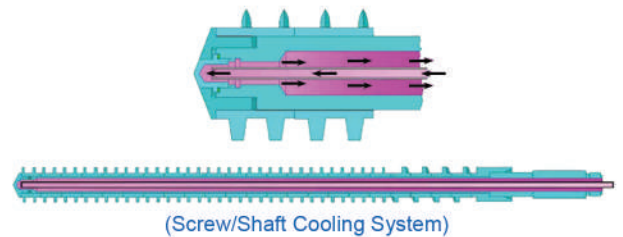
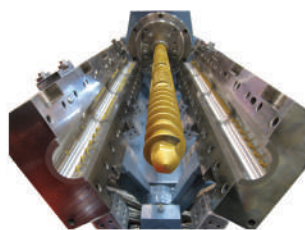
Efficient blending of liquid components,

Less spare part cost with shorter screw length (L/D),

Fast adaptation to different applications without changing hardware,



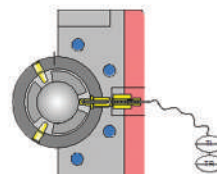
(Barrel)



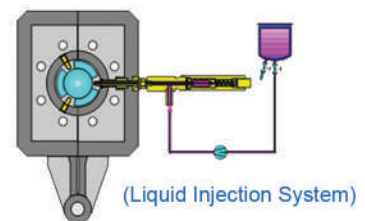
(Screw/Shaft Cooling System)

Simultaneously temperature monitoring for each barrel and melt from 4 different points,

Precise temperature control; close circuit water/oil cooling system in the barrel and shaft,



(Thermocouple)



(Liquid Injection System)

Axially opened split barrel provides easy cleaning, fast maintenance and saving time in application changes,

Replacement parts (screws, barrels, liners, pins, etc.) can be change individually,

CO-KNEADER / SJW (M)



SJW (Melt Pump) series extruders have a melt pump between main machine and the die. The benefits of melt pump for extrusion includes the elimination of surging and other fluctuations, reduction of inconsistent melt temperatures, high pressures at lower product temperatures, compensation for the pumping or mixing capacity of the extruder, possibly reduced start-up times and reduction of energy consumption.

Applications;

- Colour masterbatch and concentrates,
- High loading filler masterbatch,
- Hot-melt adhesive,
- Food,
- Engineering elastomers,
- Engineering plastic compounds,

Model	SJW-45(M)	SJW-70(M)	SJW-100(M)	SJW-140(M)
Screw Diameter (mm)	45	70	100	140
L / D	15 ~ 25	15 ~ 25	15 ~ 25	15 ~ 25
Main Motor Power (kw)	15 ~ 30	55 ~ 75	90 ~ 132	160 ~ 220
Max. Screw Speed (rpm)	500	500	500	500
Reference Capacity (kg/hour)	40 ~ 50	150 ~ 200	300 ~ 400	800 ~ 1000



CO-KNEADER / SJW (C)



SJW (Cascade Type) Co-Kneader is consisted of Co-Kneader main machine and another large size single screw extruder. The melt will fall into second stage single screw extruder after fully dispersed and distributed in the Co-Kneader. The second stage single screw extruder is focusing on extruding. The cascade system is very helpfull to achieve the better final quality and higher capacity.

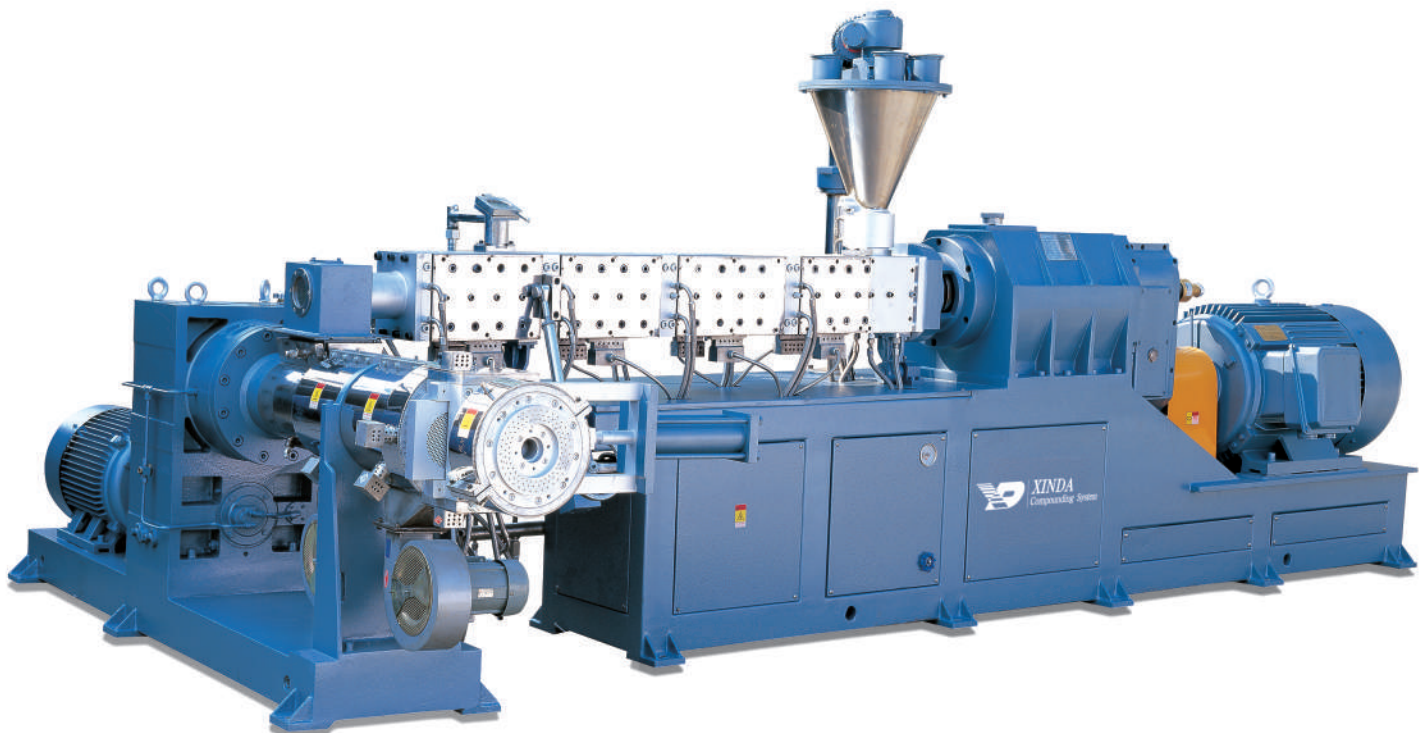
Applications;

Soft / rigid PVC compounds,
Shoe sole compounds,

Cable compounds (XLPE, HFFR, etc.),
Concentrated colour masterbatch,

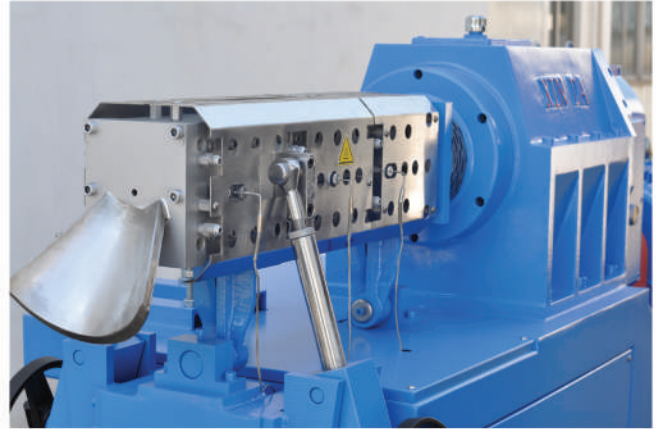
High loading filler masterbatch.
Engineered Thermoplastics

Model	SJW-45(C)	SJW-70(C)	SJW-100(C)	SJW-140(C)	SJW-200(C)
Screw Diameter (mm)	45	70	100	140	200
L / D	20 ~ 25	20 ~ 25	20 ~ 25	20 ~ 25	20 ~ 25
Main Motor Power (kw)	15 ~ 30	55 ~ 75	90 ~ 132	160 ~ 300	350 ~ 550
2nd Stage Screw Dia. (mm)	60	120	150	200	280
2nd Stage L/D	7 ~ 8	7 ~ 8	7 ~ 8	7 ~ 8	7 ~ 8
2nd Stage Motor Power (kw)	15 ~ 22	37 ~ 45	55 ~ 75	90 ~ 110	132 ~ 160
Max. Screw Speed (rpm)	500	500	500	500	500
Reference Capacity (kg/hour)	40 ~ 70	150 ~ 250	300 ~ 500	800 ~ 1200	1900 ~ 3600



CO-KNEADER / SJW (T)

With the special working principle and shorter L/D ratio of Co-Kneader SJW(T) provides a wide range of applications in thermoset plastic compounds and powder coating. Thermocouples can be mounted in drilled kneading pins at various different points along the process section to get direct contact with the melt. The combination of the liquid heating&cooling system and extremely precise monitoring of the melt temperature makes Co-Kneader very succesful solution in thermoset plastics compounds and powder coating & toner.

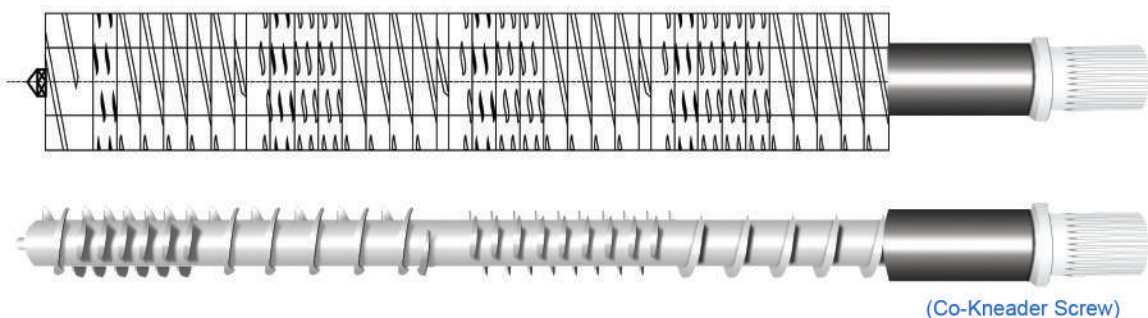


(Co-Kneader / SJW-T)

Applications;

- > Thermoset compounds,
- > Bakelite, melamine, urea formaldehyde compounds,
- > Powder coating & toner,
- > Polymer: epoxy, acrylic, urethane, polyester, etc.

Model	SJW-45(T)	SJW-70(T)	SJW-100(T)	SJW-140(T)	SJW-200(T)
Screw Diameter (mm)	45	70	100	140	200
L / D	7 ~ 15	7 ~ 15	7 ~ 15	7 ~ 15	7 ~ 15
Main Motor Power (kw)	15 ~ 30	55 ~ 75	90 ~ 132	160 ~ 220	350 ~ 450
Max. Screw Speed (rpm)	500	500	500	500	500
Reference Capacity (kg/hour)	40 ~ 80	300 ~ 700	500 ~ 1200	800 ~ 1600	2100 ~ 4300



(Co-Kneader Screw)

CO-KNEADER / SKW



XINDA developed Co-Kneader SKW series especially for more efficient manufacturing of special cable compounds. The kneading technology has been designed specially for cable compounds at the latest technology SKW series. There are kneading pins on the inner wall of the barrel. These kneading pins stay in the gaps of the screw flights while they are rotating. The interaction of the screws and pins provide better dispersion, better mixing and less friction heat. And the energy consumption is much lower than other extruder types.

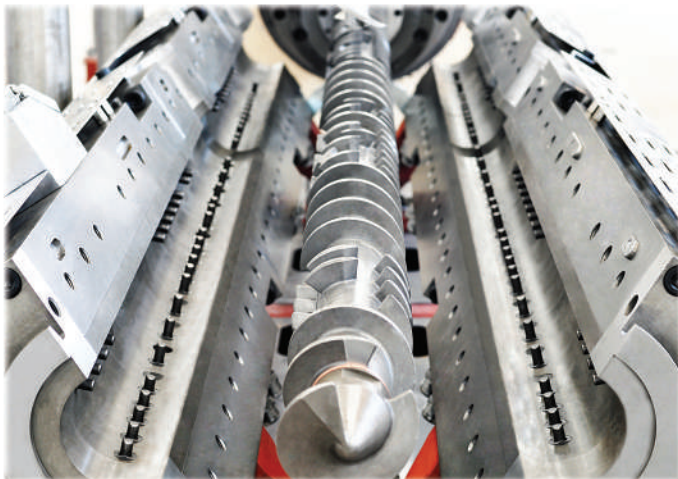
LESS PROCESS TEMPERATURES & LESS ENERGY CONSUMPTION

Applications			
Cable Compounds		Masterbatch	
HFFR	XLPE	High Concentrated MB	Black and White MB
Semi Conductive Compound	Black Sheathing	High Loading Filler MB	PET / PP / PA Fiber MB

Model	SKW-85	SKW-105	SKW-125	SKW-140
Screw Diameter (mm)	85	105	125	140
L / D	15 - 22	15 - 22	15 - 22	15 - 22
Max. Screw Speed (rpm)	500	500	500	500
Main Motor Power (kw)	110 - 160	200 - 280	350 - 450	550 - 650
2nd Stage Screw Dia. (mm)	150	180	220	280
2nd Stage L/D	7	7	7	7
Max. Screw Speed (rpm)	60	60	60	60
2nd Stage Motor Power (kw)	55	75	110	132

Reference Output (kg/hour)	SKW-85	SKW-105	SKW-125	SKW-140
HFFR Cable Compounds	200 - 400	500 - 800	800 - 1500	1600 - 2000
Black Sheathing	200 - 400	500 - 800	800 - 1500	1600 - 2000
Semi Conductive Insulating Compounds	200 - 400	500 - 800	800 - 1500	1600 - 2000
Silane XLPE Cable Compounds (Sioplas)	200 - 400	500 - 800	800 - 1500	1600 - 2000
High Concentrated Color Masterbatch	150 - 350	400 - 700	700 - 1200	1400 - 1600
Carbon Black Masterbatch	150 - 350	400 - 700	700 - 1200	1400 - 1600
High Loaded Filler Masterbatch	200 - 400	500 - 800	800 - 1500	1600 - 2000
Fiber Masterbatch	150 - 350	400 - 700	700 - 1200	1400 - 1600

CO-KNEADER / WKS

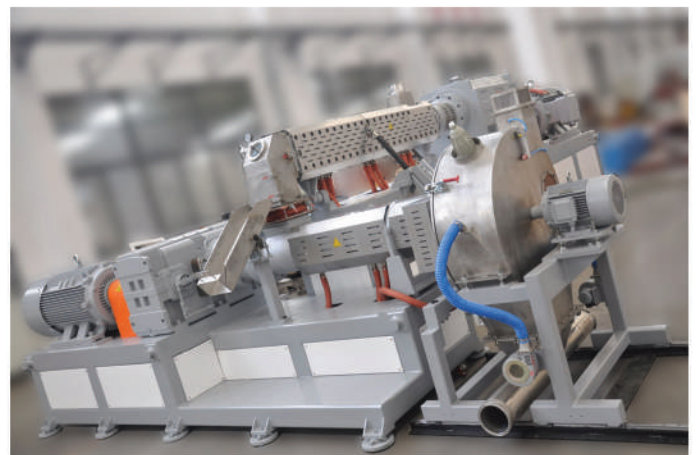


The WKS series Co-Kneader system was specially developed by XINDA for the production of high-capacity PVC compounds. With the new technology Co-Kneader WKS series, the investment and unit production costs are much better than the Co-Kneader SJW series while the users reach high capacities. At the same time, the WKS system allows the high quality production of different PVC compound types, such as soft and medical types. The system can reach a capacity of about 2500 kg/h, depending on the formulation used.

The WKS system has a shorter screw construction than the other extruder types and the temperature control of the barrel and the screw is entirely achieved with oil. Thus, the temperatures are controlled more effectively and the product quality is increased accordingly.

Newly developed larger Do/Di, optimized screw/barrel design for PVC, improved mixing capability and low barrel pressure ensure low process temperatures and low energy consumption.

In the WKS system, we use our exclusive eccentric head cutting system. This cutting system helps to produce stable production at high capacities.



**UP TO 2500 KG / HOUR OUTPUT
SOFT & MEDICAL TYPE PVC**

<i>Model</i>	WKS-100	WKS-120
<i>Screw Diameter (mm)</i>	φ113.5~98	φ120~132
<i>Do / Di</i>	1.54~1.74	1.54~1.69
<i>L / D</i>	15	15
<i>Screw Speed (rpm)</i>	500	500
<i>Main Motor Power (kw)</i>	220	280
<i>2nd Stage Screw Dia. (mm)</i>	200	220
<i>2nd Stage L/D</i>	5	5
<i>Max. Screw Speed (rpm)</i>	60	60
<i>2nd Stage Motor Power (kw)</i>	75	90
<i>Reference Capacity (kg/hour)</i>	1500 - 1800	1800 - 2500

SJW CO-KNEADER | APPLICATIONS & CAPACITY TABLE

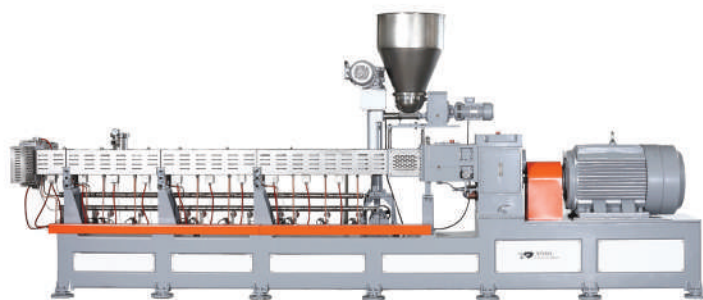
Application	Raw Materials	SJW-45	SJW-70	SJW-100	SJW-140	SJW-200
		Capacity (kg / hour)				
Filling	PE, PP, EVA + CaCO ₃ (≥85%), Talk	20 - 60	100 - 300	200 - 500	400 - 800	1900 - 3600
	Titanium Pigment (≥80%)					
	ABS, PC, PS + Al(OH) ₃ , MG(OH) ₂ , AL ₂ O ₃ (≥70%)	20 - 50	100 - 200	200 - 400	400 - 700	1800 - 3300
	PP, PA, ABS + Fe Powder, Magnetic powder, Ceramic powder (≥90%)	20 - 70	100 - 350	200 - 500	400 - 800	1900 - 3600
Blending	PE, PP, PS, PA, EVA + SBS, EPDM, NBR, Silastic, etc.	20 - 50	150 - 250	200 - 400	400 - 700	1800 - 3300
	(PE, PA, PC) + ABS; TPU + ABS; PBT + PET; PP + PE, vb.	20 - 50	100 - 200	150 - 300	400 - 700	1800 - 3300
Masterbatch	(PE, PA, ABS, PS, PVC, PET, PP) + (Pigment & Additives)	20 - 50	80 - 300	100 - 400	300 - 600	1700 - 3000
Functional Masterbatch	Biodegradable Masterbatch; PE, PP, PS + Starch	20 - 50	100 - 200	200 - 500	400 - 800	1900 - 3600
	Flame Reterdant Masterbatch; PE, PP, PA, ABS, PBT, PET + Flame Reterdants and Additives	20 - 50	100 - 250	200 - 600	400 - 800	1900 - 3600
	Carbon Black Masterbatch; PE, PP, PET, ABS, EVA + Carbon (30-50%)	20 - 40	80 - 200	100 - 250	400 - 700	1800 - 3300
	Cooling Pellet, Anti-Fog Pellet, Heat-Preserving Pellet	20 - 60	100 - 300	250 - 500	400 - 800	1900 - 3600
	Anti-Bacterial Pellet					
	EVA Thermo-soluble Glue, Polyurethane, Lightening Pellet, Fluorplastic, UV Resistant Plastic, Antistatic Material, Cunductive Material, etc.	20 - 60	100 - 300	100 - 500	400 - 800	1900 - 3600
	Low-smoke and Non-halogen Flame Reterdant Compounds	15 - 30	100 - 300	150 - 450	400 - 800	1900 - 3600
Toughening Reinforcing	PP, ABS, PPS, PA6, PA66, PC, PET, POM + Choppable Glass Fiber, Cyristal Whisker or Carbon Fiber (20-50%)	20 - 50	100 - 300	200 - 500	400 - 800	1900 - 3600
Wire & Cable Compounds	HDPE, LDPE, LLDPE, MDPE, Jacketed Compounds, Insulated Materials, Cross-Linked Compounds, Flame-reterdant Wire & Cable Compounds, PP Wire & Cable Compounds	30 - 80	150 - 250	200 - 550	400 - 800	1900 - 3600
	Conductive / Semi-Conductive Compounds	20 - 50	80 - 200	100 - 300	300 - 700	1800 - 3300
Thermosets	Phenolic Aldehyde + Glass Fiber Urea-Formaldehyde Compounds, Epoxide Powder Coating, etc.	20 - 50	100 - 150	200 - 300	500 - 800	2200 - 4300
Heat Sensitive Materials	PVC Wire & Cable Compounds, Undersole Compounds	40 - 80	200 - 300	500 - 650	800 - 1500	2500 - 4500
	Soft/Rigid/Medical PVC Compounds and Semi-Rigid Compounds, etc.	40 - 80	150 - 350	200 - 700	600 - 1500	2200 - 4500
	Non-Toxic Transparent PVC - Bottle Materials, Perfusion-tube Material	30 - 60	100 - 300	200 - 500	600 - 1000	2200 - 3800
	Low-Smoke and Halogen-Free Flame-reterdant Wire & Cable Compounds (HFFR, XL-HFFR, etc.)	20 - 50	100 - 150	200 - 350	400 - 800	1900 - 3600
	PE Cross-Linked / Peroxide Cross-Linked Compounds (XLPE, etc.)					
	Dynamic State Cross-Linked Thermoplastic Elastomer Compounds	20 - 50	100 - 300	200 - 400	400 - 800	1900 - 3600

*Note: Above mentioned capacities have been given for Co-Kneader SJW series.
They are not for Co-Kneader SKW and WKS series.*

SHJ | CO-ROTATE TWIN SCREW EXTRUDER

(Fixed Closed Barrel Type)

The XINDA SHJ Co-rotate twin screw series are designed as a modular system. The major advantage of this modular design is the versatile configurations. Different applications can be accomplished by replacing only a few barrel and screw elements.



(Screen Changer)



(Vacuum)

Applications;

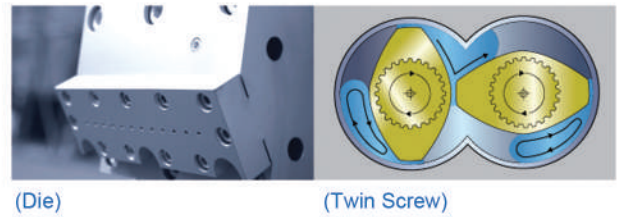
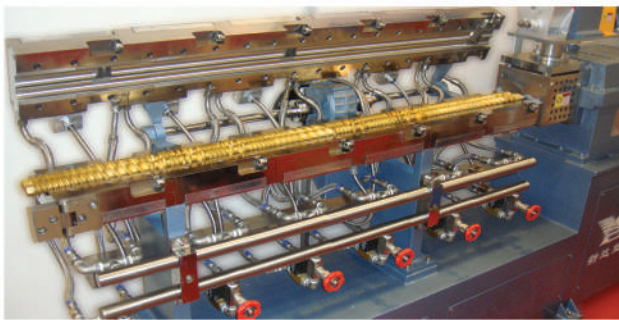
- > Plastic alloys,
- > Cable compounds,
- > Plastics modification,
- > Masterbatch production,
- > Fiber glass reinforcement,
- > Powder coating and toners,

Model	SHJ-20	SHJ-35		SHJ-50		SHJ-65		SHJ-75		SHJ-95	
Screw Diameter (mm)	21,7	35,6		50,5		62,4		71,0		91,0	
Do / Di	1,55	1,55		1,55		1,55		1,55		1,55	
L / D	28 ~ 64	28 ~ 64		28 ~ 64		28 ~ 64		28 ~ 64		28 ~ 64	
Main Motor Power (kw)	4 ~ 5.5	22 ~ 45	22 ~ 45	75 ~ 110	75 ~ 132	110 ~ 185	110 ~ 250	160 ~ 280	160 ~ 355	180 ~ 355	315 ~ 650
Max. Screw Speed (rpm)	600	600	800	600	800	600	800	600	800	600	800
Output Torque per Shaft (Nm)	32~44	175~358	131~269	597~875	448~788	875~1472	657~1492	1273~2228	955~2119	1433~2825	1880~3880
Specific Torque (Nm/cm ³)	5,6 ~ 7,7	7,0 ~ 14,3	5,2 ~ 10,7	8,3 ~ 12,2	6,2 ~ 11,0	6,5 ~ 10,9	4,9 ~ 11,0	6,4 ~ 11,2	4,8 ~ 10,6	3,4 ~ 6,7	4,5 ~ 9,2
Reference Capacity (kg/hour)	1 ~ 20	25 ~ 120	30 ~ 160	70 ~ 300	100 ~ 450	140 ~ 480	200 ~ 700	200 ~ 700	270 ~ 1000	500 ~ 1500	650 ~ 2000



PSHJ | CLAMSHELL BARREL CO-ROTATE TWIN SCREW EXTRUDER (Easy Open Barrel Type)

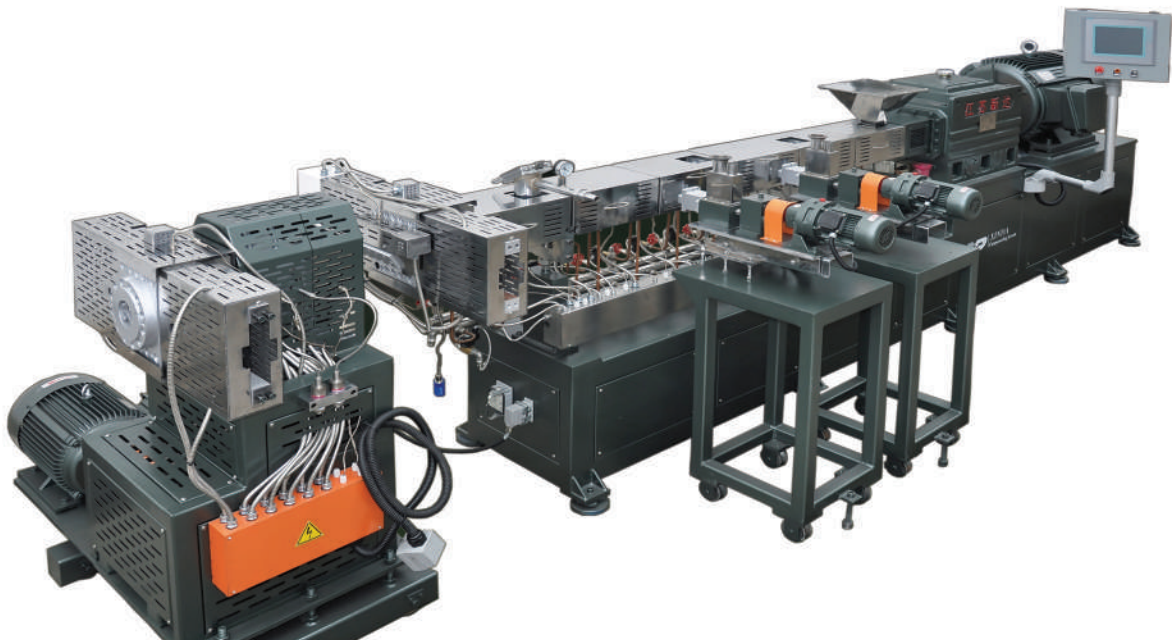
Thanks to the modular design and barrel that can be open in minutes, it gives great flexibility in producing different products and at the same time accelerates the transition process to new applications. Also, the spent time for cleaning, maintenance and waste material quantity have been minimized by easy open barrel design. Each barrel section's temperature can be set separately. While the heating of the barrels is provided by electrical heaters or oil thermoregulators, cooling is provided by water.



Applications;

- > Various plastic inorganic filler,
- > Polymer blending (plastic alloy),
- > Color Masterbatch,
- > Reinforcement of glass fiber,
- > Flame retardant pellets,
- > Anti-bacterial insulated,
- > Toughening materials,
- > Bio-degradable compounds,
- > Multi functional film materials,
- > Specific materials for automotive, household appliance and cable industry,
- > Regenerate pellets for PVC airproof pieces,
- > Thermo-soluble glue, etc.

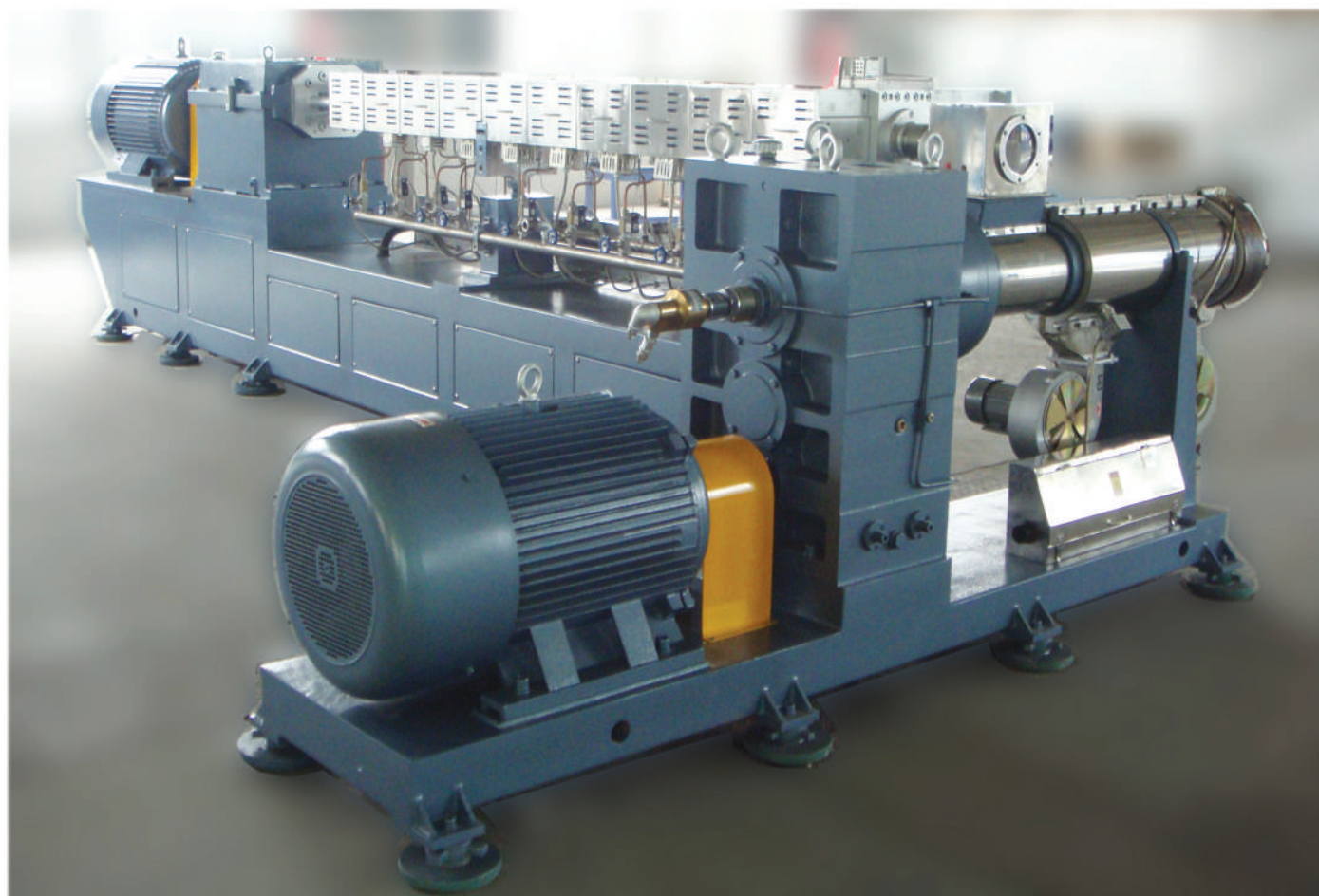
Model	PSHJ-20	PSHJ-35	PSHJ-50	PSHJ-65	PSHJ-75	PSHJ-95	PSHJ-127				
Screw Diameter (mm)	21,7	35,6	50,5	62,4	71,0	91,0	126,0				
Do / Di	1,55	1,55	1,55	1,55	1,55	1,55	1,55				
L / D	28 ~ 64	28 ~ 64	28 ~ 64	28 ~ 64	28 ~ 64	13 ~ 18	13 ~ 18				
Main Motor Power (kw)	4 ~ 5.5	22 ~ 45	22 ~ 45	75 ~ 110	75 ~ 132	110 ~ 185	110 ~ 250	160 ~ 280	160 ~ 355	75 ~ 132	90 ~ 160
Max. Screw Speed (rpm)	600	600	800	600	800	600	800	600	800	500	500
Output Torque per Shaft (Nm)	32~44	175~358	131~269	597~875	448~788	875~1472	657~1492	1273~2228	955~2119	716~1261	860~1528
Specific Torque (Nm/cm ³)	5,6 ~ 7,7	7,0 ~ 14,3	5,2 ~ 10,7	8,3 ~ 12,2	6,2 ~ 11,0	6,5 ~ 10,9	4,9 ~ 11,0	6,4 ~ 11,2	4,8 ~ 10,6	1,7 ~ 3,0	0,8 ~ 1,4
Reference Capacity (kg/hour)	1 ~ 20	25 ~ 120	30 ~ 160	70 ~ 300	100 ~ 450	140 ~ 480	200 ~ 700	200 ~ 700	270 ~ 1000	500 ~ 1000	800 ~ 1500



SHJ (C) | TWO STAGE CO-ROTATE TWIN SCREW EXTRUDER (Tandem Twin Screw Extruder)

SHJ(C) two stage twin screw series gives better results especially for shear & heat sensitive PVC and cable compounds (PVC, HFFR, XLPE, etc.). The capacity of this system increases while the process temperatures are relatively less than one stage twin screw series. There is a co-rotate twin screw extruder as the first stage and a single screw extruder as the second stage. The product is extruded under less pressure than normal one stage systems due to the die is on the second stage. Also, the processing time is shorter than one stage systems. So, the mixing and dispersing will be better in the first stage and then the melt goes to the second stage. Second stage provides cooling of the melt, removing of the gas and creating of the fixed head pressure.

Model	SHJ-35 (C)		SHJ-50 (C)		SHJ-65 (C)		SHJ-75 (C)		SHJ-95 (C)	
Screw Diameter (mm)	35,6		50,5		62,4		71		91	
L / D	28 - 64		28 - 64		28 - 64		28 - 64		28 - 64	
Main Motor Power (kw)	22 ~ 45	22 ~ 45	75 ~ 110	75 ~ 132	110 ~ 185	110 ~ 250	160 ~ 280	160 ~ 355	180 ~ 355	315 ~ 650
2nd Stage Screw Dia. (mm)	60	80	80	120	120	150	150	180	180	200
2nd Stage L/D	7 ~ 8	7 ~ 8	7 ~ 8	7 ~ 8	7 ~ 8	7 ~ 8	7 ~ 8	7 ~ 8	7 ~ 8	7 ~ 8
2nd Stage Motor Power (kw)	15 ~ 22	22 ~ 37	22 ~ 37	37 ~ 45	37 ~ 45	55 ~ 75	55 ~ 75	75 ~ 90	75 ~ 90	90 ~ 110
Max. Screw Speed (rpm)	600	800	600	800	600	800	600	800	600	800
Reference Capacity (kg/hour)	35 ~ 100	50 ~ 130	110 - 220	150 ~ 300	200 - 350	250 ~ 450	300 ~ 480	400 ~ 650	500 ~ 950	650~1250



PSHJ & SHJ		CO-ROTATE TWIN SCREW EXTRUDER APPLICATIONS & CAPACITY TABLE					
Application	Raw Materials	PSHJ-20	PSHJ-35	PSHJ-50	PSHJ-65	PSHJ-75	SHJ-95
		Capacity (kg / hour)					
Filling & Modification	PE, PP, PS, EVA + CaCO ₃ , Talk, TiO ₂	2 - 5	30 - 60	60 - 150	140 - 250	250 - 400	400 - 800
	PP, PA, ABS + Fe Powder, Magnetic powder, Ceramic powder (≥90%)	2 - 6	40 - 80	90 - 160	180 - 200	260 - 420	600 - 900
Mixing Modification	PP, PA, PE + EPDM; PE, PP, PS + SBS; PP + NBR; EVA + Silastic; TPR Compounds	2 - 5	30 - 60	80 - 160	160 - 240	280 - 400	500 - 800
	PP + PE; PBT + PET; PA, PC, CPE, TPU + ABS	2 - 4	30 - 50	60 - 140	140 - 220	240 - 360	400 - 700
Masterbatch	(PE, PP, PA, ABS, PS, PVC, PET) + (Pigment & Additives)	2 - 5	30 - 60	60 - 160	140 - 240	240 - 400	400 - 800
Functional Masterbatch	Carbon Black Masterbatch; PE, PP, PS, PET, ABS, EVA + Carbon Black	2 - 4	20 - 40	60 - 100	120 - 200	220 - 300	400 - 600
	Flame Retardant Masterbatch; PE, PP, PA, ABS, PBT, PET + Flame Retardants and Additives	2 - 5	40 - 60	80 - 160	160 - 260	240 - 400	550 - 950
	Biodegradable Masterbatch; PE, PP, PS + Starch; PP + CaCO ₃ , Talk	2 - 4	30 - 60	80 - 140	140 - 200	240 - 360	600 - 800
	Thermal Insulation; Preserving Pellet	1 - 4	25 - 40	60 - 90	120 - 180	160 - 260	400 - 700
Toughening Reinforcing	PE, ABS, PS, PBT, PET, PA, PC, PPS + Carbon Fiber	2 - 4	30 - 60	60 - 140	140 - 200	220 - 300	500 - 700
	PP, ABS, PS, PBT, PET, PA, PC, PPS, PPO + Short/Long Glass Fiber	1 - 4	25 - 45	80 - 140	180 - 260	280 - 360	550 - 750
Wire & Cable Compounds	HDPE, LDPE, LLDPE, MDPE Cable Insulation	2 - 4	30 - 60	90 - 140	160 - 240	250 - 350	450 - 650
	PE Si-XLPE Cable Compounds, PE Chemical Cross-Linked Cable Compounds, PE Radiation Cross-Linked Cable Compounds, H-Cable Compounds	1 - 4	20 - 50	80 - 120	140 - 200	220 - 300	400 - 600
	PCV Wire & Cable Compounds	2 - 6	40 - 80	120 - 180	200 - 300	300 - 400	500 - 700
	HFFR, Polyolefin Cable Compounds	2 - 5	40 - 60	80 - 120	140 - 200	220 - 300	400 - 600
Powder Coating	Poliester, Polyurethane, Epoxy Resin, Propyl, Acrylic Powder Coating	2 - 10	60 - 100	150 - 250	300 - 400	400 - 600	800 - 1200
Thermosets	Phenolic Aldehyde + Glass Fiber Urea-Formaldehyde Compounds, Epoxide Powder Coating, etc.	2 - 6	40 - 80	100 - 200	200 - 320	320 - 500	500 - 1000
Heat Sensitive Materials	PVC Wire & Cable Compounds, Undersole Compounds	2 - 6	40 - 80	120 - 180	200 - 300	300 - 400	500 - 700
	Soft/Rigid/Medical PVC Compounds and Semi-Rigid Compounds, etc.	2 - 6	40 - 70	100 - 160	180 - 280	250 - 380	400 - 650
	Non-Toxic Transparent PVC - Bottle Materials, Perfusion-tube Material	2 - 6	40 - 70	100 - 160	180 - 280	250 - 380	400 - 650
	Low-Smoke and Halogen-Free Flame-retardant Wire & Cable Compounds (HFFR, XL-HFFR, etc.) PE Cross-Linked / Peroxide Cross-Linked Compounds (XLPE, etc.)	2 - 5	30 - 60	90 - 140	160 - 240	250 - 350	450 - 650
	Cross-Linked Thermoplastic Elastomer Compounds	2 - 6	40 - 70	100 - 160	180 - 280	250 - 380	400 - 650

Note: Above capacities have been given for SHJ and PSHJ series with the max. speed of 500rpm and 1,55 Do/Di.

Please contact us for our 600 and 800 rpm high torque systems.

EXTRUDER SPARE PARTS

Spare Part and Support

Xinda provides lifetime spare parts supply for all customer. If one of our customers over the world needs a spare part, Xinda sends the related part within 24 hours by courier from Turkey or China warehouse after received the payment. Also, if the requested spare part is a vital part for the system such as screw, barrel, pin, liner, etc. we give it to the courier within 1 hour after received the payment from buyer. All components are manufactured with OEM quality and conformity guarantee. There may be different material options for spare parts according to customers' request such as; chrome steel, nitrided steel, bi-metallic, etc.

Xinda provides with life time service for all the parts on the machine.

Screw : All kinds of extruder screws are produced in our company. The screw profiles of our systems are always available in stocks. Also, we produce other brand's screw profiles.



Shaft : Shafts in standard sizes are available in warehouse. In addition, it can be produced in special sizes upon request.

Liner : The liners of all our systems are available in stocks. Also, we can produce special sizes liners upon request.



Barrel : The barrels of our systems are available in our stocks.

Pin : The pins of Co-Kneader are available in Turkey stocks.



Nylon Shear Pins : The gearbox is connected to the main motor with nylon shear pins to be protected from overloading. These nylon pins are produced specially by Xinda.

Electromagnetic Valve: Available in Turkey warehouse.

Temperature Meter : Omron temperature meter is available in Turkey warehouse.



Thermocouple : Available in Turkey warehouse.

Pressure Sensor Set : Pressure sensor sets consisting of sensor, cable and indicator panel are available in our Turkey stocks.



Electric Heaters : The heating elements used in our systems are available in stocks.

Pelletizer Blade : We have two different quality pelletizer blades in the stocks.

Pelletizer Roller : Rubber and PU pelletizer rollers are available in stocks.

Others : Solid state relay, contactors, Co-Kneader screw holder and other spare parts are available in our warehouse.



AUXILIARY EQUIPMENTS

HIGH SPEED MIXER



(SHR-100A)

Our high quality standard mixers have an excellent efficiency for the mixing of all kind plastic materials. Rising temperatures are balanced by water jacket system. Also, it is double speed for different purposes. High Speed mixer has an important role to prepare powder+pellet or powder+powder premix materials for masterbatch and compound industry.

SHR Series High Speed Mixer

Model	Total Volume	Effective Volume	Motor Power	Shaft Speed	Heating	Discharge
SHR - 10A	10	7	2.2 / 3.3	750/1500	Friction	Manuel / Pneumatic
SHR - 50A	50	30	7 / 11	510/1020	Electric heating 4kw	Pneumatic
SHR - 100A	100	75	14 / 22	525/1050	Electric heating 6kw	Pneumatic
SHR - 200A	200	150	30 / 42	490/980	Electric heating 6kw	Pneumatic
SHR - 300A	300	225	40 / 55	480/960	Electric heating 6kw	Pneumatic
SHR - 500A	500	375	47 / 67	441/886	Electric heating 9kw	Pneumatic
SHR - 800A	800	560	83 / 110	330/660	Friction	Pneumatic
SHR - 1000A	1000	750	90 / 132	330/660	Friction	Pneumatic

SRL Series Two Stage High Speed Mixer

Model		Total Volume	Effective Volume	Motor Power	Shaft Speed	Heating	Discharge
SRL-100/200	Hot Mixer	100	75	14 / 22	525/1050	Electric Heating 6kw	Pneumatic
	Cold Mixer	200	130	5.5	130		
SRL-200/500	Hot Mixer	200	150	30 / 42	490/980	Electric Heating 6kw	
	Cold Mixer	500	320	7.5	110		
SRL-300/600	Hot Mixer	300	225	40 / 55	480/960	Electric Heating 6kw	
	Cold Mixer	600	380	11	100		
SRL-500/1000	Hot Mixer	500	375	47 / 67	441/882	Friction	
	Cold Mixer	1000	640	15	80		
SRL-800/2500	Hot Mixer	800	560	83 / 110	330/660	Friction	
	Cold Mixer	2500	1280	22	50		



(SRL Horizontal Series)



(SRL Vertical Series)

AUXILIARY EQUIPMENTS

Ribbon Blender

The Ribbon blender, thanks to its special knife system, ensures perfect homogenous blends at low speeds and prevents the product accumulation on the bottom. The blades, which are arranged in spiral strips at certain angles on the main shaft, allows the products to move in different directions. It is used in chemistry, medicine, food industry.



Container Mixer

Thanks to the container mixer special design divided into two separate units, mixing head and potable container, the cleaning time between batches is minimized therefore the risk of contamination too when switching from one type of production to another.

Mix, storage and transportation are optimized by directly using the same containers that can be easily inserted in a dosing system either to a weighing scale or an extruder

Screw Cleaning Device

The device has designed to clean especially extruder screws. It is fast, easy, low cost and eco-friendly system. Cleaning is provided by only abrasive powder and compressed air without using any chemicals. The abrasive powder can be use again in many times. Except the cleaning of extrusion screws, it can be used for burr cleaning, surface cleaning before painting and surface cleaning of hard parts after coating, casting, welding, heat treatment, etc. The surface cleaning quality can reach up to SA3 with an experienced operator,



New Type High Speed Plastic Grinder (Pulverizer)

TP series pulverizer is a disc type plastic grinding mill with a high efficiency and low energy consumption. This system is used to pulverize PE, PVC, PP, PS, ABS, nylon, EVA, PET and other plastic materials.

<i>Model</i>	TP-500
<i>Main Motor Power</i>	37 kw
<i>Draft Fan Power</i>	5.5 kw
<i>Vibration Sieve Power</i>	0.75 kw
<i>Air Shutter Power</i>	0.75 kw
<i>Capacity</i>	180 – 280 kg/h
<i>Sizes</i>	1900×1700×3900 mm
<i>Weight</i>	2200 kg

AUXILIARY EQUIPMENTS

Semi-Auto Weighing and Packaging System



This semi-auto weighing and packing system is suitable for packing of various plastic materials, chemicals, building materials and foods in the form of powder and pellet (granule) with the density $\geq 0.4T/m^3$. It is high speed and dust-free. Also, it doesn't break the bags. There are three different speeds available; low, medium and high speed.

Power	4.5 kw
Sensor	Mettler Toledo
Weighing Range	10 ~ 25 (kg/pack)
Packing Speed	200 ~ 280 (pack/hour)
Closing Method	Stitching, hot sealing or vacuum
Application	Weighing/Packing of pellet and powder materials

Vacuum Loader

Vacuum loaders are an effective and efficient solution for transporting especially granule materials. Installation, using and maintenance are easy owing to independent body design. The storage tank is stainless steel SUS304. Optionally PLC controlled. Filter does not clogging owing to the automatic dust collector system. The motor is brushless induction type. There are different capacities between 200-2000 kg/hour.

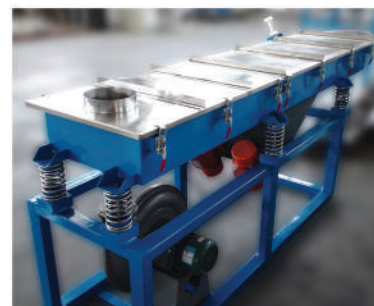


Pelletizer (Granulator)

Model	Gantry & Strand
Invertor	Siemens
Pellet Size	$\phi 3 \times 3 \text{mm}$
Capacity (kg/h)	60 - 100 - 300 - 600 - 1000
Others	Fast, easy and safe cleaning.

Vibration Sieve

The main purpose of the vibration sieve is to obtain homogeneous products by classifying the particles according to their sizes. In addition, vibration contributes to the drying of moist particles and to the cleaning of dust particles from the pellets. There are different capacities between 10-2000 kg/h.



LABORATORY EQUIPMENTS

Melt Flow Indexer (MFR - MVR)

Melt testing instruments provide pre-information about melt flow characters of plastic materials in the form of granule, pellet or powder.



XINDA_MFI-400 XINDA_MFI-400A

XINDA_MFI-400/400A ;

This device is a high precise melt testing instruments for the measurement of melt flow rate (MFR)/(MI) in quality control and research applications. It's suitable to measure melt flow characters of PP, PE, POM, ABS plastics and plastic productions, widely used in factories, products quality testing station, scientific and research institutes, and concerned industries.

XINDA_MFI-400B/400C ;

This device is a high precise melt testing instruments for the measurement of melt flow rate (MFR)/(MI) and melt volume rate (MVR) in quality control and research applications. It's suitable to measure melt flow characters of PP, PE, POM, ABS plastics and plastic productions, widely used in factories, products quality testing station, scientific and research institutes, and concerned industries.



XINDA_MFI-400B XINDA_MFI-400C

Halogen Moisture Analyzer



TP-M Halogen moisture analyzer can use for PE, PP, PET, PS, PVC, PA and all other plastic materials. This analyzer is a fast humidity measurement device works with the halogen thermo-gravimetric principle. Analyzer detects the humidity by reducing the moisture of material by heating. Halogen heating method is faster and more effective than international oven heating. Easy to use. High precision. User can watch the humidity, measurement, drying time, temperature and all other informations from the screen of analyzer. Also, it can be connect to computer.

Lab. Two Roll Mills

This machine can be used for testing, analyzing and inspection of plastic materials such as masterbatch, PVC compound, etc... Electrically heated special mold, double chrome mirror roller, high dispersion, homogenous temperature distribution, adjustable roller gap, small and easy use.



Other Lab. Equipments

- 20mm co-rotate twin screw extruder,
- Lab. type single screw extruder
- Lab. type turbo mixer (10li),
- Color measurement device,
- Water detection device,
- Density meter.
- Ligth box,
- Ash test,



HEAD OFFICE (Jiangsu Xinda Tech Limited)

No.3-1, Huandong Road Xiake Town, Jiangyin City,
Jiangsu Province, CHINA

Tel : +86 510 86537763 (Chinese / English)
Mobile : +86 138 06160020 (Chinese / English)
E-mail : kedan@xindacorp.com
Web : www.xindacorp.com

TURKIYE PLANT (Xinda Europe Dis. Tic. Ltd. Sti.)

Sumer Mh. 2507 Sk. No:59 Merkezefendi
Denizli, TURKIYE

Tel : +90 258 3774327 (Turkce / English)
Mobil : +90 544 4654551 (Turkce / English)
E-mail : info@xindatr.com
Web : www.xindatr.com